



WASHOE COUNTY

# Junior Ranger

## Activity Guide



## This Junior Ranger Guide belongs to:

---



Welcome to the Washoe County Junior Ranger Activity Guide! Get ready to discover some of the fascinating and fun things about your Washoe County Regional Parks, Trails, and Open Space! Park Rangers are the individuals who make sure that your parks are preserved and protected. Junior Rangers can help! Together with an adult or friend, you can become a Junior Ranger. All you have to do is:

- ✓ **Work through the guide as best as you can.**
- ✓ **Plan your own adventure on page 6.**
- ✓ **Complete at least three Outdoor Activities on page 7.**
- ✓ **Join a Washoe County Park Ranger on at least one Park Ranger-led activity or volunteer event.**

Once the requirements have been met, contact your nearest Washoe County Regional Park office to schedule a swearing in with a Park Ranger. You can also register for an upcoming Park Ranger-led activity and get a swearing-in before the activity starts. Visit [www.WashoeCountyParks.com](http://www.WashoeCountyParks.com) for more information or scan the QR Code below.

More Adventure Awaits! Get your book stamped after attending a Junior Ranger program or volunteer event in each of the Regional Parks featured in blue on the map or an associated Park or Open Space area. Collect all six stamps to get a **SUPER Junior Ranger** prize, including a frameable certificate of completion presented at a future Washoe County Open Space and Regional Parks Commission meeting! Contact your nearest park office for details.

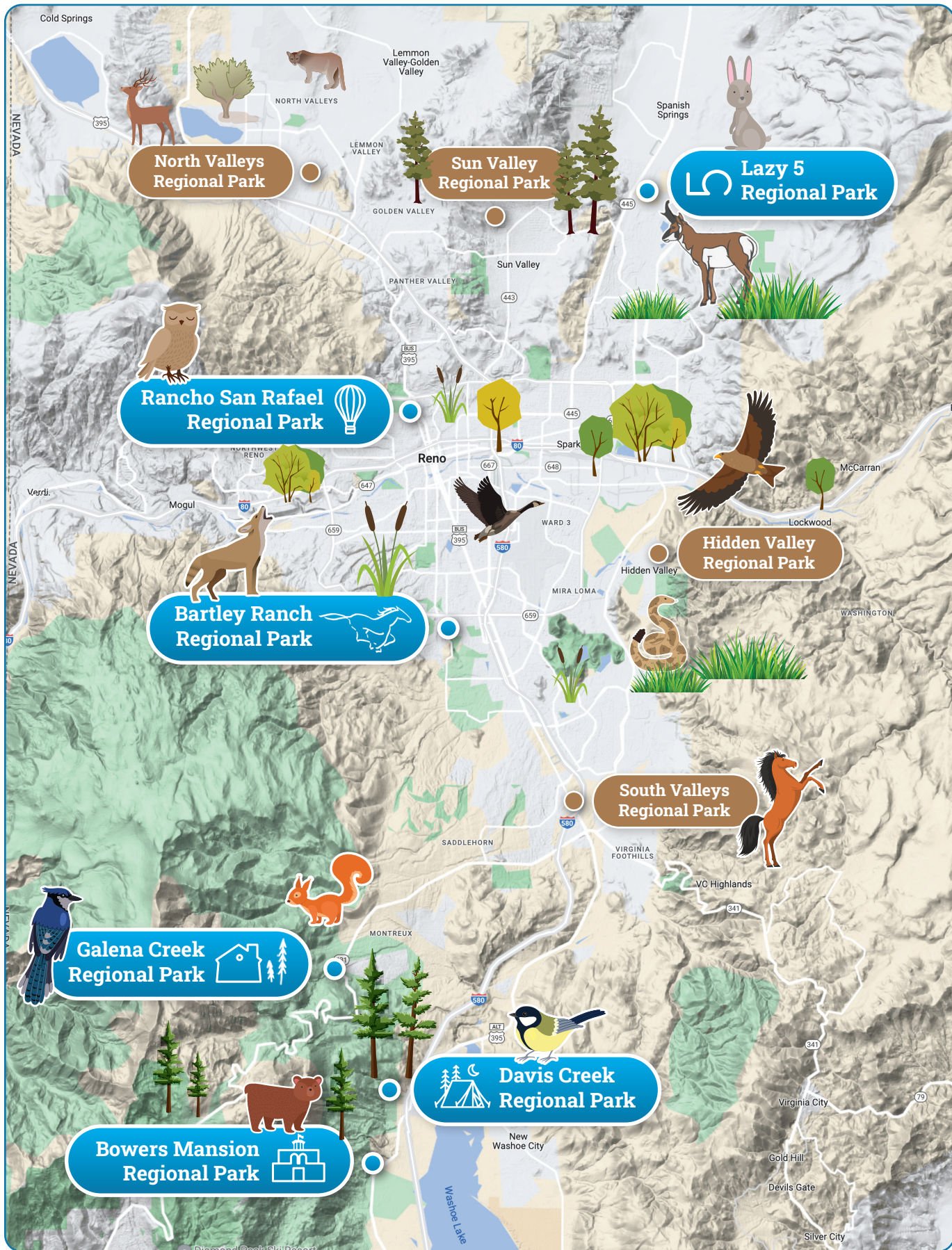
As you complete the activities in this guide, please observe and enjoy nature in its own environment. Take only photographs and make sketches as souvenirs! Please practice the 'Leave No Trace' principles while visiting the parks.

- 1 Plan ahead and prepare. Pay attention to the weather & wear appropriate attire. Carry water, first aid supplies, etc.**
- 2 Stay on designated trails, do not create shortcuts, and do not disturb sensitive habitat.**
- 3 Dispose of waste properly. Pack it in/Pack it out.**
- 4 Leave what you find for others to enjoy.**
- 5 Minimize campfire impacts by being fire wise.**
- 6 Respect wildlife and observe them from a safe distance.**
- 7 Be considerate of other park visitors.**



Good luck, have fun, & enjoy your regional parks!

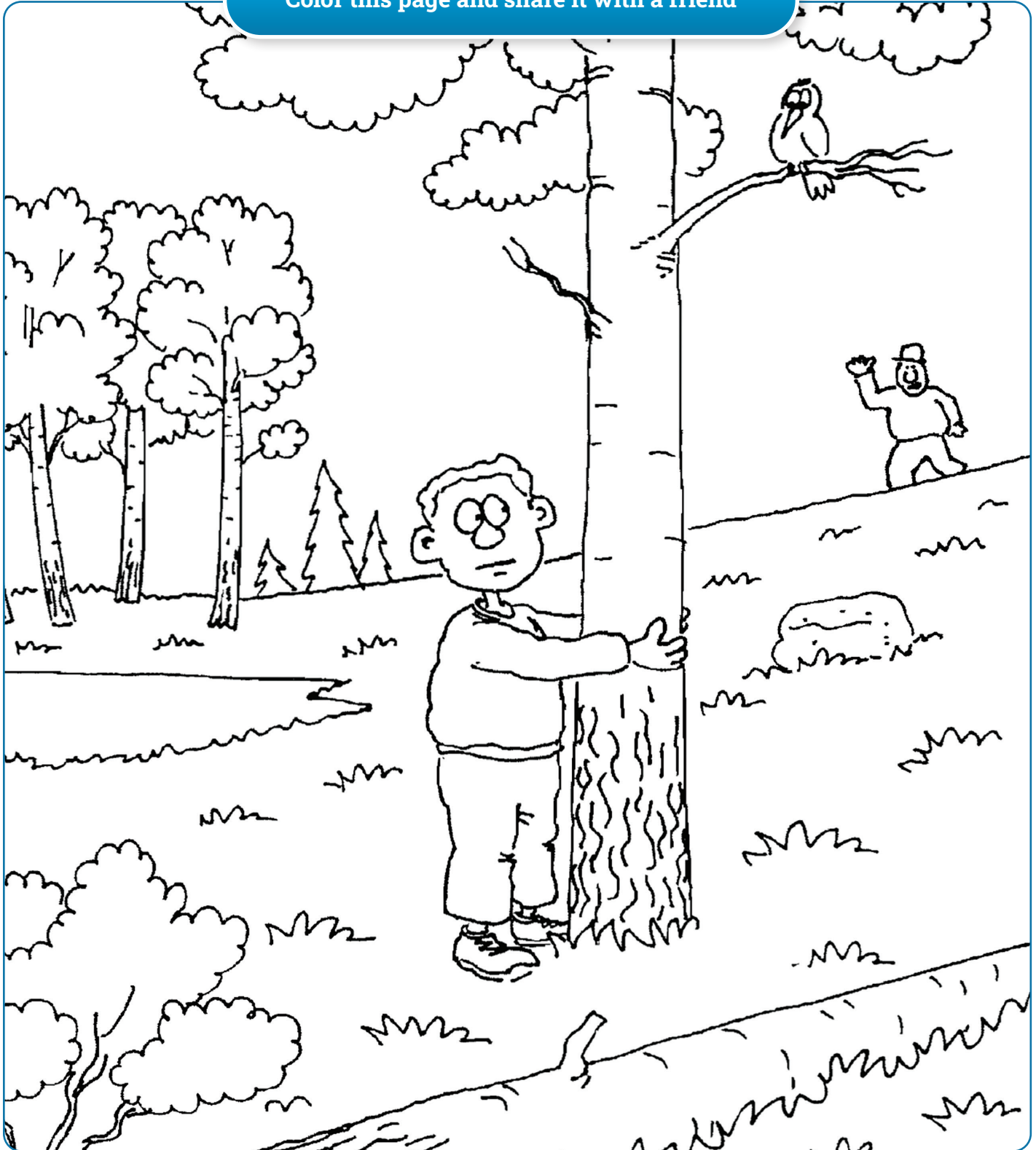
# Area Map



## If you ever get lost

Stay put (hug a tree) and wait for help. Make a noise that others can hear. You won't get in trouble!

Color this page and share it with a friend



## My nature journal

Today's Date is: \_\_\_\_\_

The weather today is: \_\_\_\_\_ (example: sunny, cloudy, rainy, snowing)

The temperature is: \_\_\_\_\_ F      The season is: \_\_\_\_\_

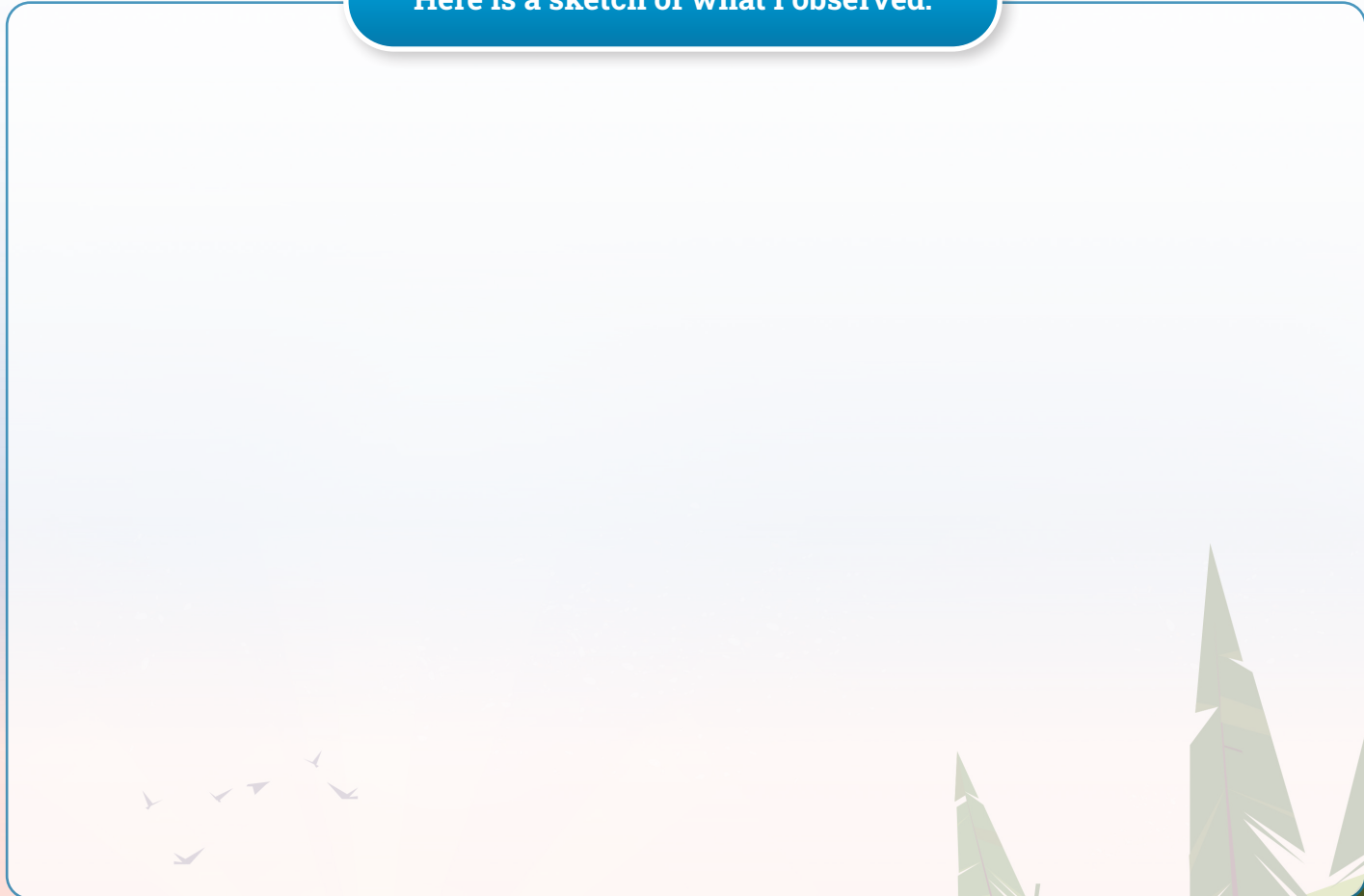
I am at the: \_\_\_\_\_ (Name of park)

Animals & Plants I've seen: \_\_\_\_\_

Sounds I've heard: \_\_\_\_\_

Something I've observed: \_\_\_\_\_

Here is a sketch of what I observed:



# Interview a Ranger

## Meet a Park Ranger



Park Rangers work around the world and do many different jobs. All Park Rangers have similar goals however; from protecting plants, animals and other resources to helping park visitors enjoy their visit. Interview a Ranger at the park you are visiting.

Date of Interview: \_\_\_\_\_ Location of Interview: \_\_\_\_\_

Name of Park Ranger: \_\_\_\_\_

How many years has the Park Ranger worked in the field? \_\_\_\_\_

How did the Park Ranger prepare for the job? \_\_\_\_\_

\_\_\_\_\_

What does the Park Ranger like about their job? \_\_\_\_\_

\_\_\_\_\_

What is the hardest part of their job? \_\_\_\_\_

\_\_\_\_\_

What is one thing that the Park Ranger does regularly? \_\_\_\_\_

\_\_\_\_\_

What is the Park Ranger's favorite wild animal in the park? \_\_\_\_\_

\_\_\_\_\_

What is one thing the Ranger would like you to learn from this interview?

\_\_\_\_\_

\_\_\_\_\_

\_\_\_\_\_

\_\_\_\_\_

\_\_\_\_\_



## Get ready for a trip

Preparing and planning for a trip includes researching where to go and possible routes, bringing the necessary equipment and knowing how to use it, checking the weather forecast and telling someone where you're going and when you expect to be back.



**Fill out a trip plan for your next trip in the outdoors and share it with your family:**

Start (day of week, date, time) \_\_\_\_\_

Intended Return (day of week, date, time) \_\_\_\_\_

Purpose of trip (day hike, camping trip, skiing, etc.) \_\_\_\_\_

Destination: \_\_\_\_\_

**Plan A – Intended route in:**

**Intended route out:**

**Plan B – Alternative route in:**

**Alternative route out:**

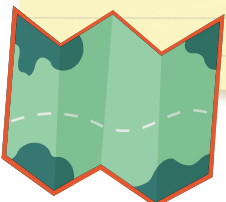


Weather forecast: \_\_\_\_\_

Vehicle, license #, make/model: \_\_\_\_\_

**Equipment/supplies taken:**

**Number in group and who:**

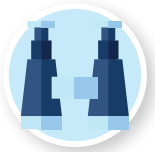


# Outdoor Activities

## What activity did you participate in?

Every park has something different and special you can do on your visit. Look at the list below of activities and draw a line from the appropriate icon to the activity. Circle the activities in which you have participated. For each circled item, write where you participated in that activity.

Where you participated



Snowshoeing



Fishing



Hiking



Picnicking



Sledding



Wildlife Viewing



Dog Walking



Cross Country Skiing

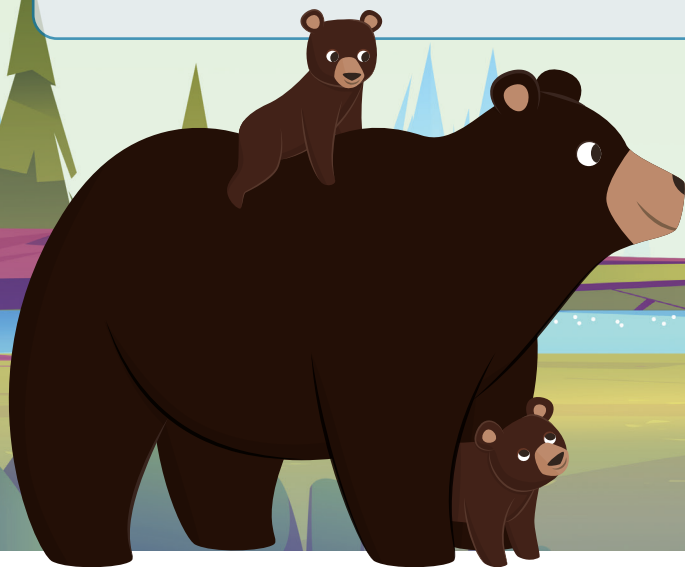


Meet a Park Ranger



## Be bear aware!

Washoe County parks are home to a variety of wildlife, including Black Bears. While visiting parks or trails within bear habitat, it is important to:







### Always:

- ✓ Store food in sealed containers in a locked vehicle or bear-resistant food locker.
- ✓ Dispose of all trash and food scraps into a bear-resistant trash can or dumpster and secure them after each use.
- ✓ Stay on trail and make noise while hiking. Hiking in groups is always a good idea!
- ✓ Keep pets leashed and small children close to adults.

### Never:

- ✗ Approach wildlife such as bears, especially cubs. Enjoy the sighting from a distance.
- ✗ Feed wildlife. It changes their natural feeding habits and makes them more reliant on humans for food.
- ✗ Leave food unattended. Bears will return to areas where they have found an easy food source.







### If you see a bear:

-  Keep your distance and remain calm. Stand your ground and do NOT run.
-  Face the bear and speak in a calm voice, slowly waving your arms to identify yourself as a human and not a prey animal. Bears may become curious, but generally don't have interest in humans.
-  If the bear approaches, do what you can to appear larger. Speak LOUDLY and make as much noise as possible.
-  Slowly move away from the bear as calmly as possible and give them an escape route.

## Welcome to Lazy 5 Regional Park

Lazy 5 Regional Park is named after the cattle ranch that once sprawled across this valley. Today, people visit the park to splash in the Melio Gaspari Water Play Park, play pickleball in the Hive, picnic under towering elm trees, or attend free concerts on Wednesday evenings in the summer. Whatever you choose to do at Lazy 5, **please leave the park cleaner than you found it!**

### Where should you dispose of your trash?

Aluminum Cans		<input type="radio"/>
 Cigarette butts		<input type="radio"/>
Glass Bottles		<input type="radio"/>
 Pet waste		<input type="radio"/>
Hot coals from your barbecue		<input type="radio"/>
 Soda bottle		<input type="radio"/>

1

Bring a bag to scoop your pet's waste, then dispose of it in the nearest trash can or dumpster.

2

Crush that can and toss it into a blue recycle bin.

3

Smoking is not allowed in parks, but if you find butts, they should go into the trash.

4

These aren't allowed in parks because they can break and hurt someone, but if you see one, recycle!

5

Pour water on them and leave them in the grill to cool – the Rangers will take care of them!

6

Pour out any liquid and recycle!

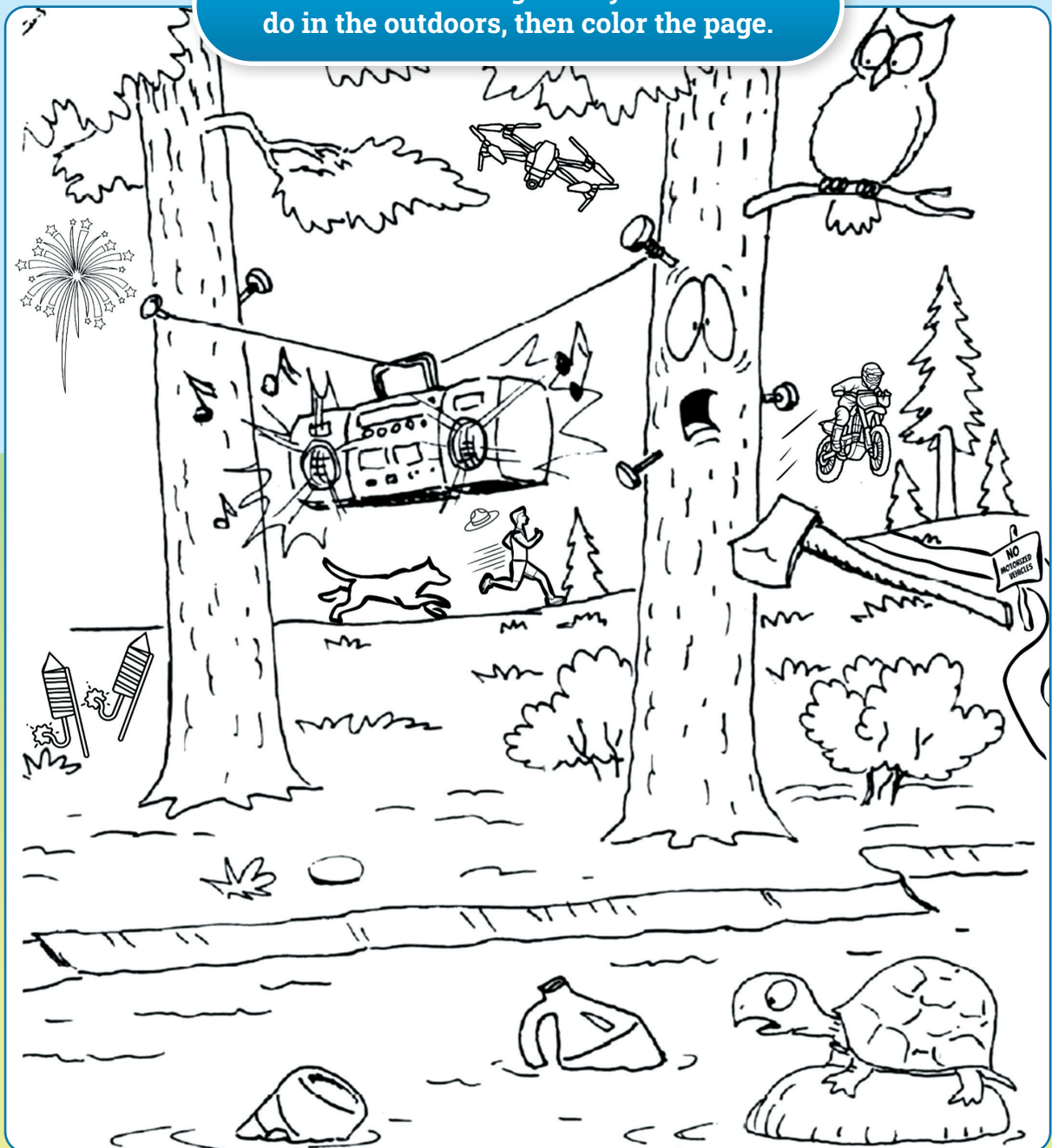




## Welcome to Rancho San Rafael Regional Park

Rancho San Rafael Regional Park was originally a working ranch. The park opened in 1982 as one of Washoe County's largest at 580 acres. With so many visitors and so many ways to recreate, **it is important to respect nature and each other**. Always follow park rules - they are there to help you and others enjoy the park and all it has to offer!

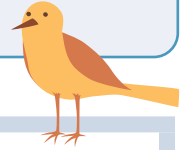
Circle all of the things that you shouldn't do in the outdoors, then color the page.





## Welcome to Bartley Ranch Regional Park

Find these places while visiting the park. When you find one, mark the space with an X. Get BINGO when you complete a line of X's.



### Scavenger

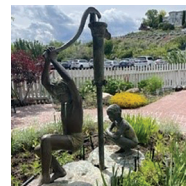
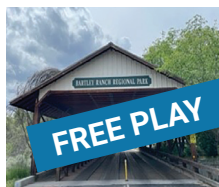
# B

# I

# N

# G

# O



## Welcome to Galena Creek Regional Park

This park shares its name with a nearby mining town that was named for the mineral \_\_\_\_\_, which was found abundantly in the area by miners in the 1860's. The \_\_\_\_\_ was built here in 1931 to replenish fish populations locally. This creek is part of the \_\_\_\_\_ River Watershed. \_\_\_\_\_ is caused by flooding of the creek, as is the placement of the many large granite boulders around you. Their worn surfaces create ideal habitat for \_\_\_\_\_, a symbiotic relationship between algae and fungus. \_\_\_\_\_ species such as Quaking \_\_\_\_\_ and narrow-leaved \_\_\_\_\_ grow along the creek, while the arid hillsides are scattered with Greenleaf \_\_\_\_\_. The tallest trees around you are the "Gentle" \_\_\_\_\_. The cones of the \_\_\_\_\_ are a favorite food for \_\_\_\_\_. The "blood-red" \_\_\_\_\_ is a rare, protected wildflower that appears here in early spring. Remember to look and listen all around! You may spot a \_\_\_\_\_ with its crest of black feathers, or you may hear a mountain \_\_\_\_\_ ordering a cheeseburger! \_\_\_\_\_, the park's largest herbivores, can often be seen feeding on grasses and antelope \_\_\_\_\_. Often seen during the twilight hours, \_\_\_\_\_ can have a litter of 1-7 pups per year. The stubby-tailed \_\_\_\_\_ may be seen hunting near the creek. When recreating in \_\_\_\_\_ territory, it's best to keep food and trash stored securely. Know before you go! It's always a good idea to \_\_\_\_\_ for your next adventure by telling someone your \_\_\_\_\_, checking the weather \_\_\_\_\_ and learning about any rules and regulations to follow.

Aspen  
 Jeffrey Pine  
 Bobcat  
 Prepare  
 Bitterbrush  
 Truckee  
 Black Bear  
 Coyote  
 Snow Plant  
 Willow  
 Stellar's Jay  
 Manzanita  
 Erosion  
 Galena  
 Chickadee  
 Forecast  
 Riparian  
 Mule Deer  
 Fish Hatchery  
 White Fir  
 Squirrels  
 Lichen  
 Plan

B	E	Q	G	R	E	E	D	E	L	U	M	M	C	O
O	I	E	N	A	I	R	A	P	I	R	A	C	O	O
B	O	T	K	Q	L	I	C	H	E	N	N	P	Y	H
C	P	Y	T	C	S	E	Y	F	R	Y	Z	R	O	L
A	W	G	I	E	U	Z	N	F	O	R	A	E	T	M
T	S	O	J	U	R	R	D	A	S	E	N	P	E	S
B	S	P	L	A	N	B	T	M	I	H	I	A	R	Q
Q	E	V	E	L	J	B	R	P	O	C	T	R	A	U
F	W	B	N	N	I	B	K	U	N	T	A	E	E	I
D	T	N	A	L	P	W	O	N	S	A	K	D	B	R
E	E	D	A	K	C	I	H	C	J	H	P	Z	K	R
W	H	I	T	E	F	I	R	E	O	H	P	D	C	E
Y	A	J	S	R	A	L	L	E	T	S	C	M	A	L
J	J	J	E	F	F	R	E	Y	P	I	N	E	L	S
O	G	A	T	S	A	C	E	R	O	F	H	E	B	N

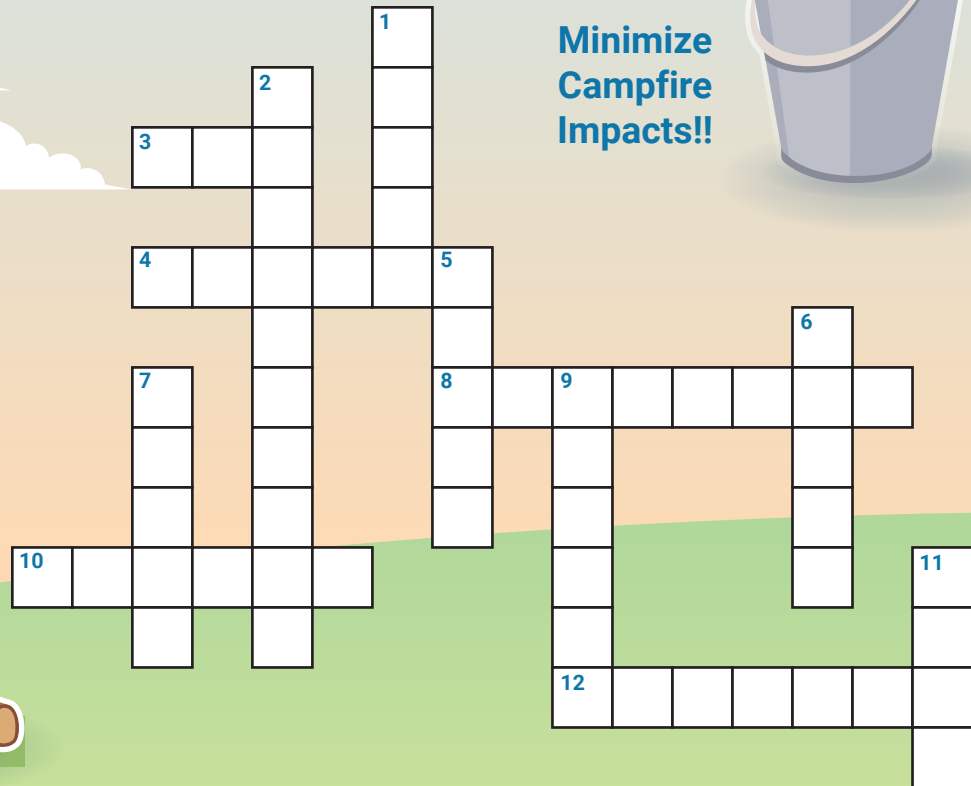




# Welcome to Davis Creek Regional Park

Camping at Davis Creek Regional Park is a fun way to experience the great outdoors! While building a campfire is a great way to add to the enjoyment of any camping trip, knowing campfire safety will help you and your fellow campers be safe. Complete the crossword puzzle to learn some important ways to minimize campfire impacts

**Minimize  
Campfire  
Impacts!!**



### Across

- 3. It's not a good idea to \_\_\_ when around or near a campfire.
- 4. It's best not to \_\_\_ sticks, pinecones, or pine needles from surrounding areas to burn in your campfire.
- 8. \_\_\_ should only be used in fire rings or freestanding park grills.
- 10. Use firewood no \_\_\_ than the fire ring.
- 12. A safe campfire is knee-height or \_\_\_.

### Down

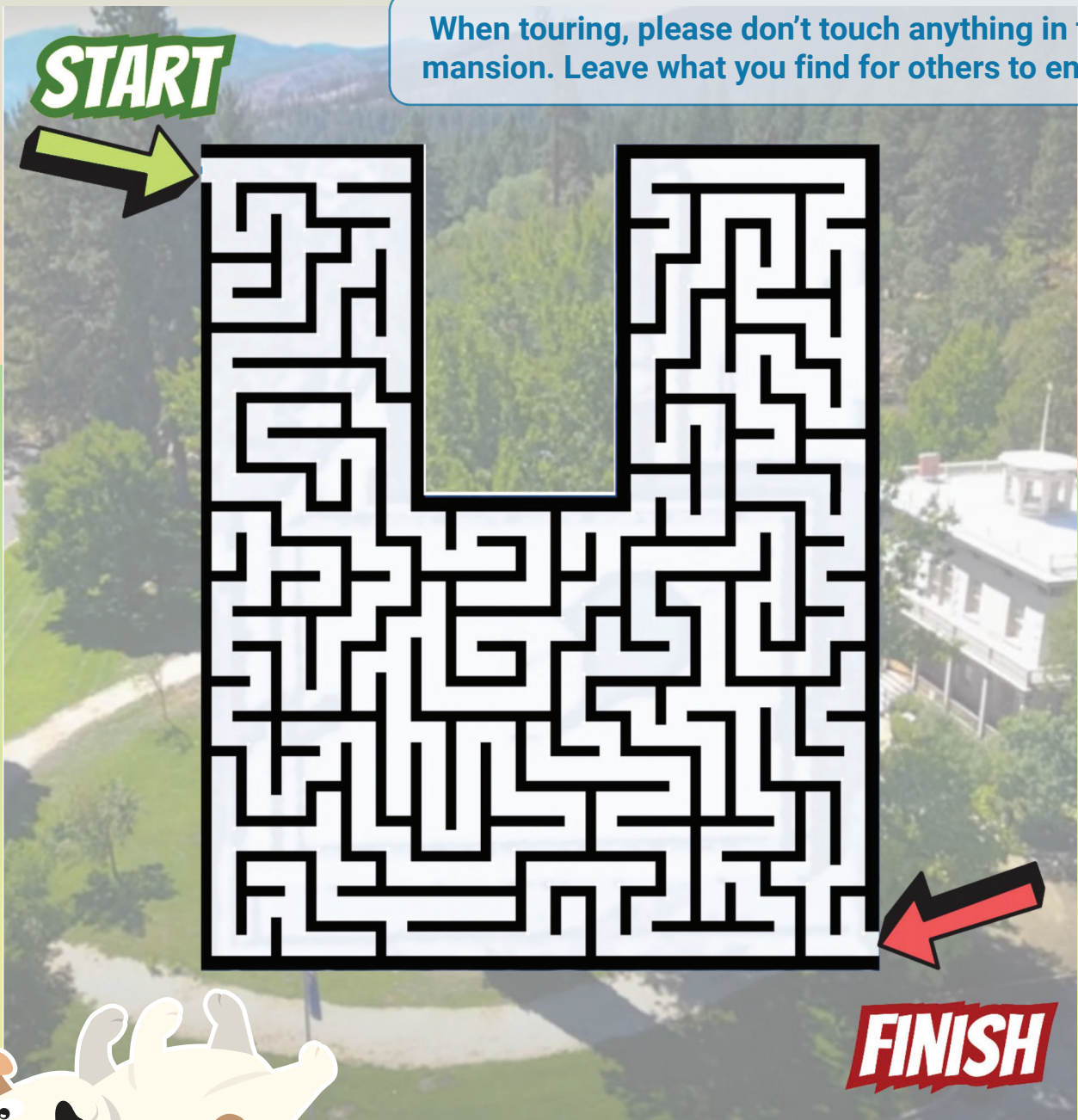
- 1. Always \_\_\_ your campfire before leaving it.
- 2. Never leave your campfire \_\_\_.
- 5. Throwing \_\_\_ into a campfire can cause sparks to fly.
- 6. Always keep a bucket of \_\_\_ nearby.
- 7. Only established fire \_\_\_ should be used to build a campfire.
- 9. Only \_\_\_ should build campfires.
- 11. Water works better than \_\_\_ for extinguishing campfires.



## Welcome to Bowers Mansion Regional Park

Did you know? Sandy and his wife Eilley built the Bowers Mansion in 1862 after becoming Nevada's first Comstock Lode Millionaires. They earned a fortune with their silver mine near Gold Hill, Nevada. After becoming a Washoe County park in 1946, the mansion was restored in the 1960's to become one of the most impressive examples of Nevada history. You can take a guided tour of the mansion, which is open seasonally each year! Can you find your way through the Mansion Maze?

When touring, please don't touch anything in the mansion. Leave what you find for others to enjoy.



# Native Plants

Plants and animals throughout the Great Basin depend on each other for survival. No matter how big or small, whether they be predator or prey, all animals rely on plants to live. In turn, animals return the favor by acting as pollinators and seed distributors for some plants and enrich nutrients in the soil through decomposition. Match the native plants with their animal allies.

## Great Basin Wildrye

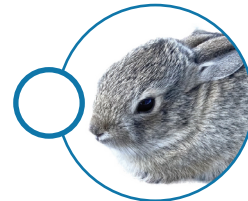
is a native bunchgrass that can grow six feet tall. Birds love to eat its seeds in the fall, but in the spring, it is irresistible food for this browsing animal.



**Mountain Chickadee**

## Palmer's Penstemon

produces showy and fragrant flowers full of nectar for these flying insects.



**Cottontail Rabbit**

## Big Sagebrush

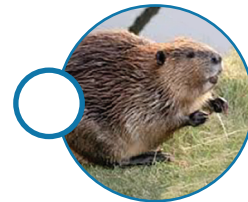
is Nevada's state flower and one of the few plant foods available in winter for this fast-moving mammal.



**Bumblebee**

## Jeffrey Pine

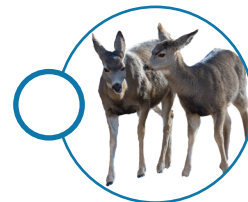
is Nevada's tallest tree and its seeds are an important food source for these birds.



**Beaver**

## Coyote Willow

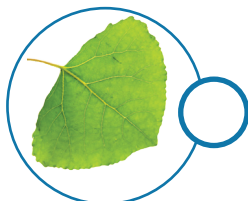
grows along riverbanks, helping to keep the water clean, and its leaves are a tasty treat for these energetic animals.



**Mule Deer**

## Fremont Cottonwoods

are found in riparian corridors (areas next to rivers) where they help to prevent erosion, shade the water, and provide the bark that feeds this large rodent.



**Pronghorn**



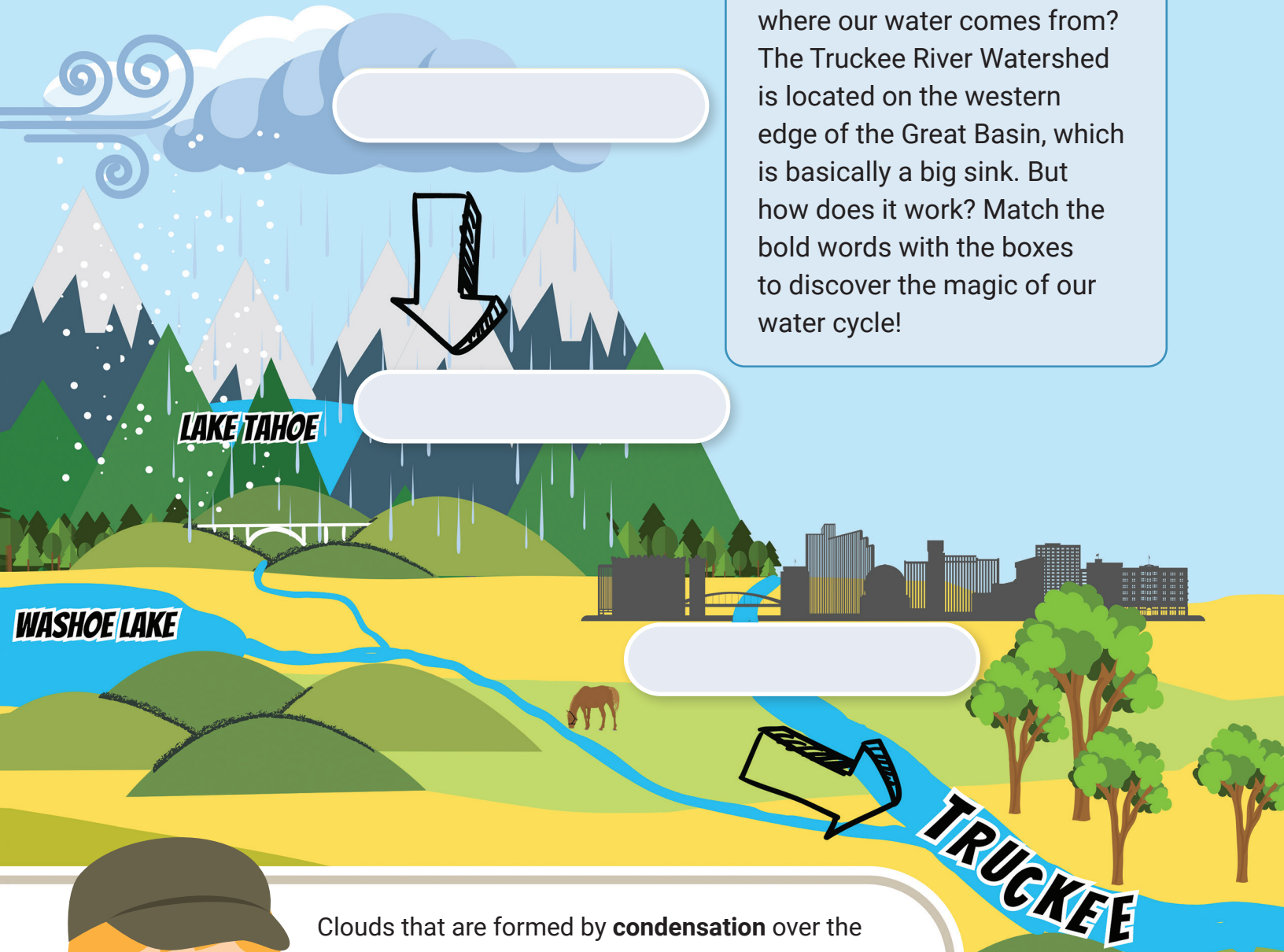
# Who Lives Here?

Biomes are zones where a particular kind of environment exists, such as deserts, forests, and wetlands. The relationship between plants and animals has a lot to do with what type of environment they are in. Herbivores (prey animals) that depend on a certain type of plant for survival may only be found where that plant exists, while carnivores (predatory animals) might roam between one or more biomes as they hunt for their food. Can you tell who lives here by looking at their tracks? Draw a line between the animal and their tracks, and then draw a second line to connect them to their biome. *Hint: There may be more than one possible biome depending on the animal!*



## The Truckee River Watershed

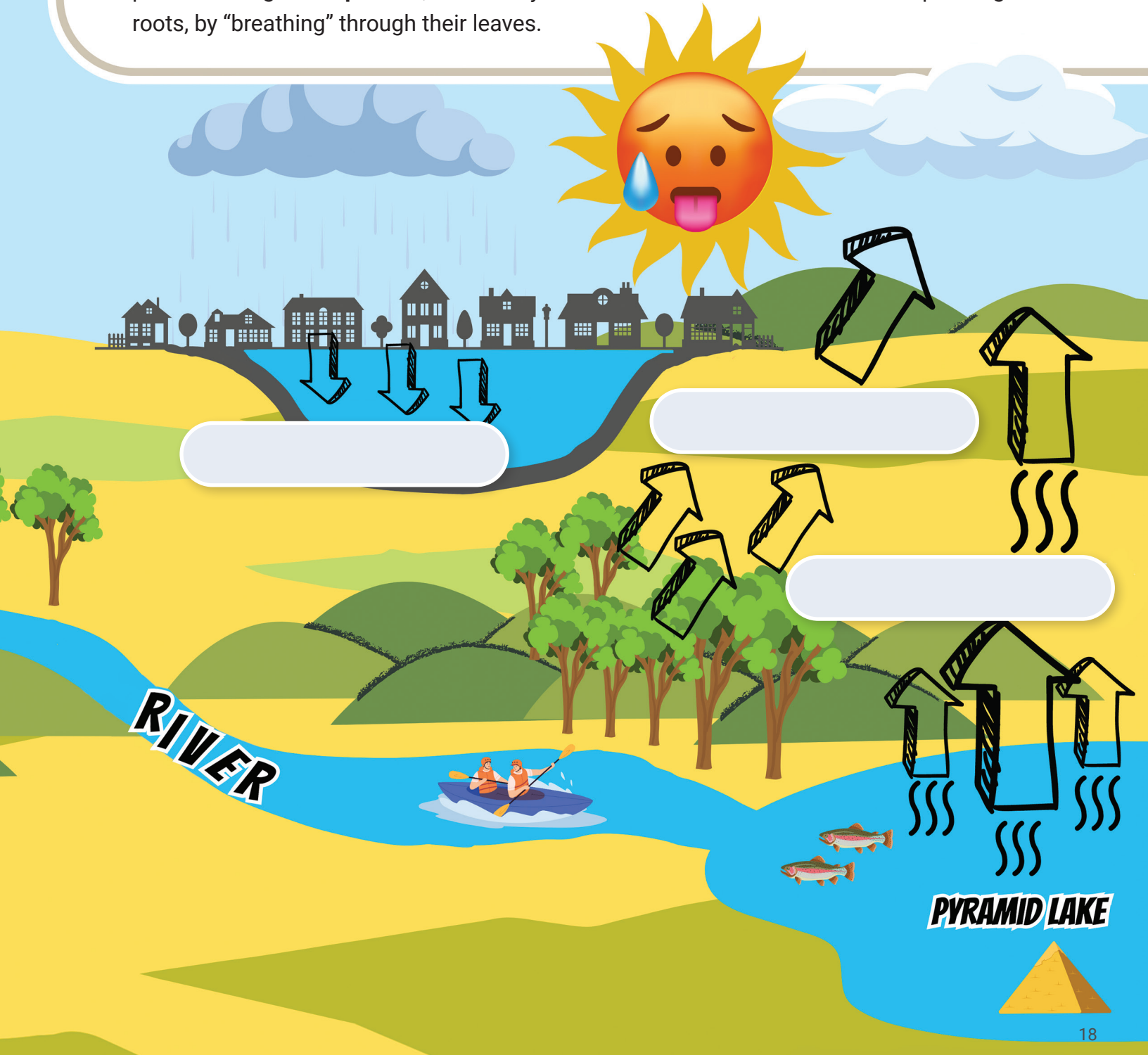
Have you ever thought about where our water comes from? The Truckee River Watershed is located on the western edge of the Great Basin, which is basically a big sink. But how does it work? Match the bold words with the boxes to discover the magic of our water cycle!



Clouds that are formed by **condensation** over the Pacific Ocean are pushed by wind over the Sierra Nevada Range. As this happens, they become so condensed that they begin to form water droplets that fall as **precipitation** in the form of rain and snow. Snow that accumulates in the Sierras melts to form creeks and streams. Known as **runoff**, the creeks and streams that flow down the western slope of the mountains will flow toward the Pacific Ocean, while those that flow down the eastern slope will flow toward the Lake Tahoe Basin, which is the beginning of the Truckee River.



As the river winds its way into the Truckee Meadows, it is combined with other creeks and streams along the way, while some water will percolate into the soil to form an underground **aquifer**. Meanwhile, snowmelt that settles in Washoe Valley to create Washoe Lake joins runoff from Galena Creek, Thomas Creek and others as they flow into Steamboat Creek on the east side of the valley, combining with the Truckee River near Lockwood. The river continues east, eventually making the 121-mile journey to Pyramid Lake. The sun will heat the lake, causing **evaporation** to take place, where the water will again condense in the atmosphere. Plants also contribute to this process though **transpiration**, where they release water that was once soaked up through their roots, by “breathing” through their leaves.



\_\_\_\_\_

\_\_\_\_\_

\_\_\_\_\_

**PYRAMID LAKE**

## What You Need to Play:

A pencil, a paperclip and a penny.



### How to play:

Use the pencil to spin the paperclip on the green dot at each turn, and move Penny either forward or backward the number of spaces spun.

Spin the paperclip on the brown dot to go to that item.

When Penny has to poop, or you find litter, ask an adult if you can pick it up and move to the nearest trash can.

**Penny the Pug wants to go for a walk!**

Keep her safe as you navigate the trail through the park



## Trails for Everyone!

There are miles of amazing trails all over Washoe County, for every \_\_\_\_\_ and activity! There are flat trails, steep trails, forest trails, desert trails and everything in between. They \_\_\_\_\_ us to nature and to each other. Trails belong to us all. No matter what kind of trail, or where it might lead, there are a few things to remember when visiting these special areas:

Always come prepared – bring proper clothes, shoes, water (for pets too!) and tell someone your plan. **Staying on \_\_\_\_\_ trails is important because it protects habitat and reduces \_\_\_\_\_.** Avoid creating new trails or \_\_\_\_\_. It's important to know and follow any rules and to be considerate of others on the trail. Pack it out! Do your part to keep the trails clean for other visitors and \_\_\_\_\_. \_\_\_\_\_ should yield to hikers, and everyone should \_\_\_\_\_ to equestrians.

If you encounter a rider on horseback, approach slowly and talk to the horse and the rider, especially if you are on a bicycle. Any time you need to let someone past you, it is best to move to the \_\_\_\_\_ side of the trail.

Draw an arrow in the direction of the trail visitor who should yield to the other and circle the one who should always have the right-of-way.

ecntcon

idnolwhl

tshsrotcu

tiyaibl

nireso

citsbiyscl

xigtisen

liyed

fewlidli



## My Journey to Become a Junior Ranger

- ✓ Successfully planned an outdoor adventure?  Yes  No
- ✓ Completed at least 3 outdoor activities?  Yes  No
- ✓ Walked Penny the Pug?  Yes  No
- ✓ Joined a Park Ranger on a Ranger-led activity?  Yes  No

## Junior Ranger Oath:

I, \_\_\_\_\_  
Print your name

### Promise to:

Appreciate, protect, and respect all of Washoe County's Parks, Trails, and Open Spaces so that all visitors can enjoy them today and in the future.

Continue to explore and learn as much as possible about the plants, animals, and history of these special places.

Be a steward and share what I have learned with my friends and family.

\_\_\_\_\_  
Washoe County  
Park Ranger

\_\_\_\_\_  
Date



## Collect All Six Regional Park Stamps!



### Junior Ranger Online Resources:

For educational material and helpful resources, visit [www.WashoeCountyParks.com](http://www.WashoeCountyParks.com) and find the Junior Ranger Page under Parks/Park Programs, or scan the QR Code for more about:

- The Junior Ranger Activity Guide Answer Key
- Parks and Open Space Locations
- Trail Maps and Guides
- Leave No Trace Principles
- Park Ranger Contact Information



Printing was made possible with funding from your generous donations to our Washoe County Parks. Original content created by the Park Rangers who protect and preserve them. Special Thanks to our friends at MeshCreative for their hard work and dedication in the creation of this guide.



# Thank You!



**Bartley Ranch Regional Park**

6000 Bartley Ranch Road  
Reno, NV 89511  
(775) 828-6612

**Bowers Mansion Regional Park**

4005 Old Highway 395  
Washoe Valley, NV 89704  
(775) 849-1825

**Davis Creek Regional Park**

25 Davis Creek Road  
Washoe Valley, NV 89704  
(775) 849-0684

**Galena Creek Regional Park**

18350 Mt. Rose Highway  
Reno, NV 89511  
(775) 849-2511

**Lazy 5 Regional Park**

7100 Pyramid Way  
Sparks, NV 89436  
(775) 424-1866

**Rancho San Rafael Regional Park**

1595 North Sierra Street  
Reno, NV 89503  
(775) 785-4512

